

# WebbClutch

ROLLEASE CHAIN DRIVEN SYSTEM FOR COMMERCIAL WINDOW COVERINGS

*Even the Tallest Shades are Easy to Reach*

*Heavy Duty Mechanism*

*Spring Assist Available*

*Simple to Operate*



*Healthcare*

*Elder Care Residential Living*

*Universities & Schools*

*Corporate & Public Facilities*

*Room Darkening or Solar Screens*

*Dual Clutch Available*

*Photos/Logos/Patterns/Colors  
Custom Printed on Shades*

*All fabrics are Flame Retardant  
to meet NFPA 701*

# WebbClutch

## OPERATING SYSTEM SPECIFICATIONS

### ROLLER

Tube shall be 1 1/2" diameter aluminum 6063 alloy for strength and corrosion resistance, taped for shade material retention.

### SHADE MATERIAL

Shall be standard vinyl coated material or woven coated material of suitable strength and resilience to roll without wrinkling. Material shall be flame retardant to NFPA 701 small scale test or to other applicable rating.

### BOTTOM RAIL

5/8" Diameter Steel Tube .043

### CLUTCH MECHANISM

Rollease brand SL Series clutch mechanism with #10 nickel-plated chain and 5/16" nickelplated brass stop balls. Stainless steel chain also available upon request.

### BRACKETS

Shall be 18 gauge galvanized sheet metal 3 1/4" x 3" with 90 degree bend & 1 1/2" x 7/8" lip to accept fabric valance in front and 90 degree bend to allow face mount in rear.

### VALANCE

Shall be Continuous removable extruded ABS fascia that attaches to 3.675" x 3.675" molded ABS caps placed over 18 gauge galvanized steel mounting plates without the use of adhesives, magnetic strips, or exposed fasteners for single shades only.

OR

Shall be self-fabric made from the privacy or blackout fabric, attached to standard 0.875" x 1.5" poplar headrail, 8" in length with bar-welded (not sewn) hem. Returns, if required, shall have a heat sealed corner and can be attached to headboard with staples. Headboard shall be attached to lip on bracket plate using #8 x 0.5" stainless steel pan head screws for both single and dual shades.

OR

Shall be extruded aluminum fascia in 3" or 4" profile. Fascia shall fully conceal brackets, shade roller and fabric on the tube. Additional cost required for metal fascia.

# WebbClutch

## PRODUCT WARRANTY

### WEBBCLUTCH SHADE SYSTEM

#### **3 Year Warranty**

*We maintain a 3 year warranty on operating hardware against defects in material and workmanship from the date of installation. This warranty covers the shade in normal commercial use and does not cover damage caused by improper operation, forced operation, or willful abuse. Shades must be returned to factory or authorized agency, freight prepaid, for inspection. Repair or replacement will be made at WebbShade's discretion.*

### SHADE FABRICS

#### **3 Year Warranty**

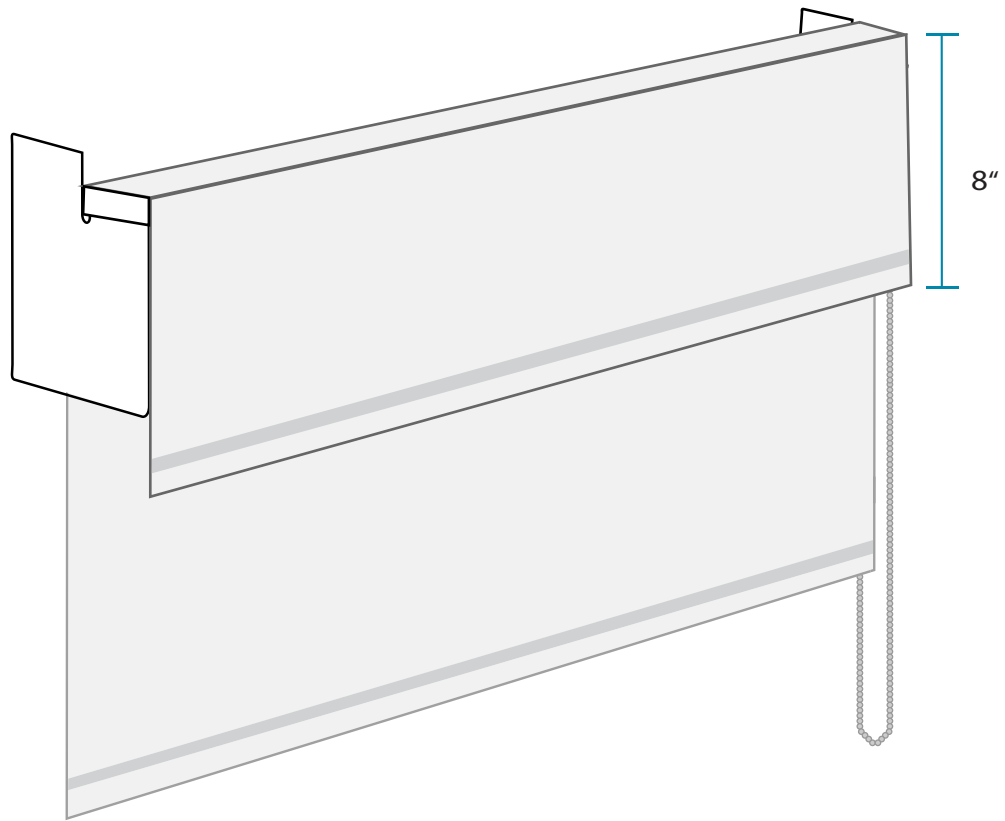
*We maintain a 3 year warranty on fabrics used on the WebbShade systems against defects in material and workmanship from the date of installation. This covers the shade in normal commercial use and does not cover damage caused by improper cleaning, or willful abuse such as slashing, cutting, excessive heat, etc. Shades must be returned to factory or authorized agency, freight prepaid, for inspection. Repair or replacement will be made at WebbShade's discretion.*

### INSTALLATION

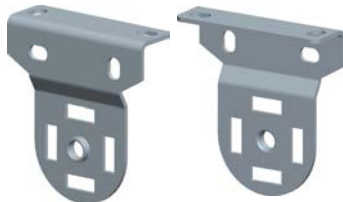
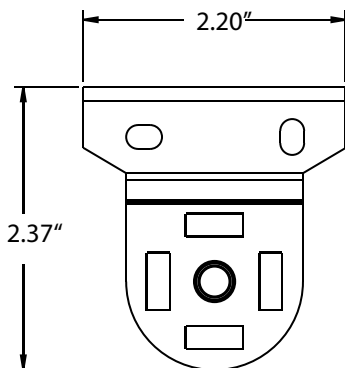
#### **1 Year Warranty**

*WebbShade guarantees installation for 1 year upon date of completion for services performed by one of our factory trained installers. A happy and satisfied lifetime customer is our goal.*

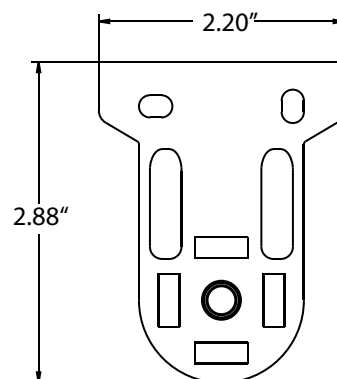
# Webb Clutch Fabric Valance



**SLB 660**



**SLB 680**

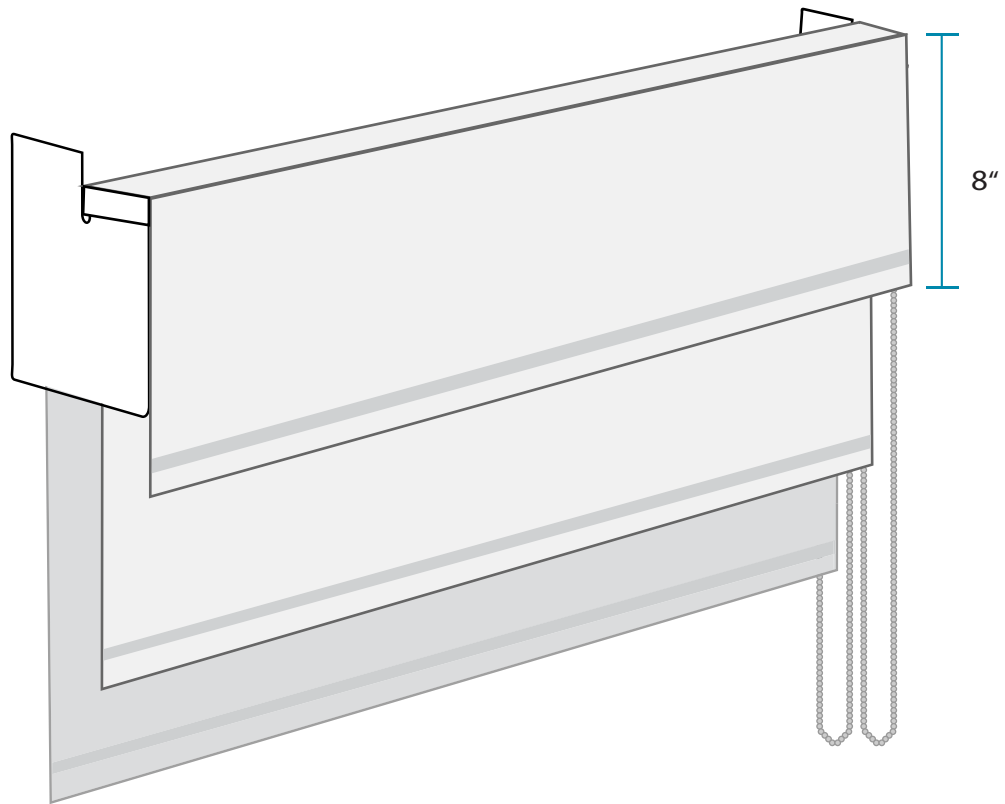


**CLUTCH  
BRACKET**

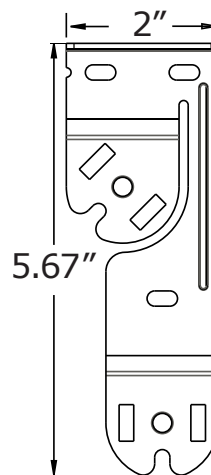


For installation information  
[www.youtube.com/webbshade](http://www.youtube.com/webbshade)

# Dual Clutch Fabric Valance



DUAL CLUTCH VERTICAL BRACKET



For installation information  
[www.youtube.com/webbshade](http://www.youtube.com/webbshade)